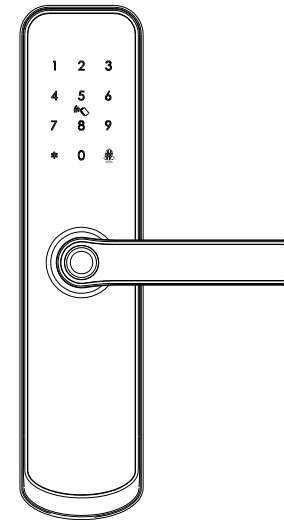


User Manual-Smart Digital Lock

A260 TTLOCK VERSION



Scan the QR code below to download the APP



Search Google Play or APPLE Store with TTLOCK



IC Card



Password



Key



APP



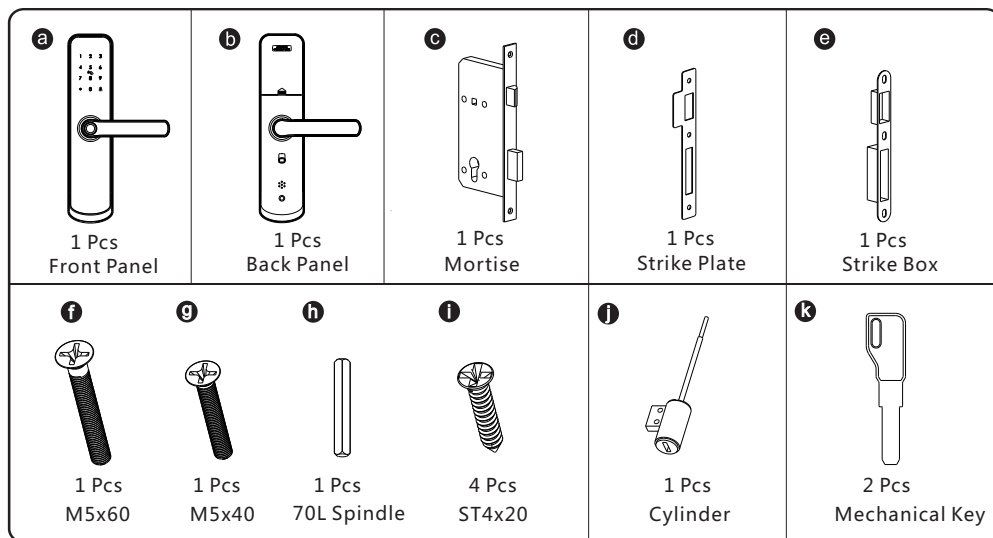
Fingerprint

Smart your life!

Version 1.0 Edition 2020

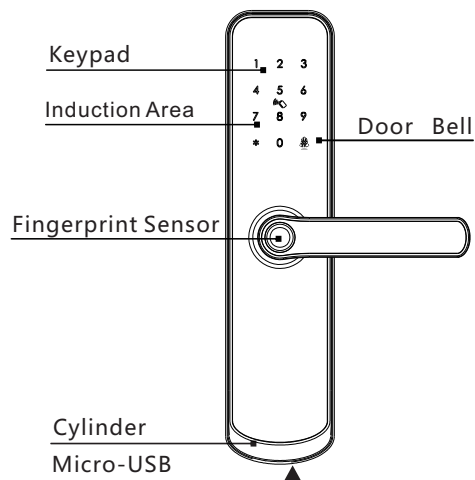
1 PACKING ACCESSORIES

Please check the packing box and accessories when you got the lock in hand.

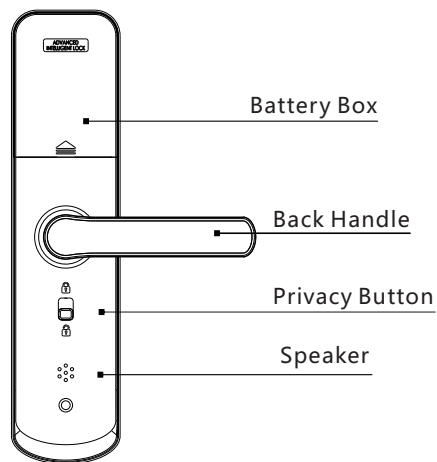


2 PRODUCT SPECIFICATION

Front Panel



Back Panel



TO OPEN AND CLOSE & BELL FUNCTION

Enter the valid password or touch the IC card or press the finger to open the door.

Bell function: You can press the button “#” to ring the bell.

3 SYSTEM INTRODUCTION

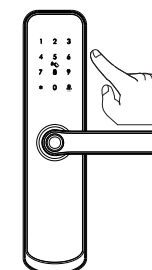
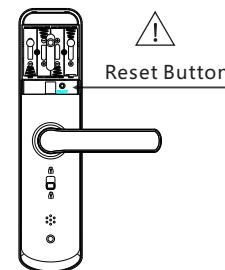
Material	Aluminum Alloy,ABS,Acrylic
Available Color	Black/Satin Nickle
Door Thickness	35-55mm
Communication	Bluetooth
Support OS	iOS 7.0 or above, Android 4.4 or above
Battery Life	7000 times normal unlock(10-12 months)
Power Supply	DC6V:4pcs AA alkaline batteries
Static Current	≤50uA
Dynamic Current	<200mA
Unlock Way	Fingerprint,IC Card,password,APP,wristban,mechanical key
Unlock Time	1~1.5 seconds
Working Temperature	-20~50 degree
Working Humidity	10%~95%
Factory Password	Factory master password:123456,after configuration,it will be invalid
Available Mortise	Support 60#Single latch, 6050/5572/4585/6085/7085 mortise
Virtual Password	Available
User Capacity	Card:200 group/password:150 groups/Fingerprint: 100 groups, one admin

4 RESET TO FACTORY STATE

Attention

There is one Reset button on the back of rear panel.

You can press this button for 5 seconds with two sound tip, then the lock is under factory state, the default master password is: 123456 you can open the door with any password or fingerprint.



Factory State:
Master passcode is 123456.

DEAD LOCK FUNCTION

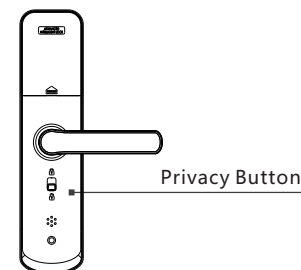
Attention

There is one privacy button on the back panel.

You can pull upward this button with sound tip “Locked” ,

then the lock is dead locked inside, only the administrator can access the door, other user password or card will be invalid.

And you can pull downward the button one more time with sound tip “Unlocked” to cancel this function.



5 INFORMATION AND SAFETY WARNINGS:

5.1 Introduction

This user manual will guide you through the functions and usages of our A260 Wi-Fi smart lock. It is important that you follow the instructions and regard all notes that appear throughout this manual. Consult this manual before you attempt to use this lock. If you have any questions that not answered by this manual or on need of non-routine service, please call our customer service hotline or send FAQ to us.

5.2 Safety Warnings:

⚠ When reading this manual, note these icons: notes with the icon Must be read, understood and obeyed to prevent injury or damage to the lock.

⚠ General Usage

- This lock shall only be used as described in this manual.
- Verify that all parts of the lock are accounted for. If any parts are missing, please contact our service person.
- Under factory default state, the lock is on always open status after you install the lock (no power on). It means the handle is free and lock can't be locked, you shall power on the lock with batteries or set admin and pair the lock with the APP and then the lock will be under private mode automatically.
- Handle directions are reversible, please kindly follow chapter 6 to change the direction if the door opening direction is not same with your lock. Should you have any problem, please contact our service person.
- There is protective film on the front touch panel, if there are some scratches on the film, please remove the film if you need.
- Please use 4pcs AA batteries. Do not mix old and new batteries or other Zn/Mn batteries. Never insert objects into the lock other than batteries as described in this manual.
- Verify all surfaces are flat and level before beginning installation, installation on doors or surface with any types of deformity such as gaps or warping may cause the lock to malfunction or fail to operate entirely.
- Never apply any cleaner directly to any part of this lock. Only use clean water or mild cleaner on a soft non-abrasive cloth when cleaning.
- Potential shock warning: do not allow water or liquids to get into the lock's electric parts.
- The lock must be used with TTLOCK APP. The lock will function without the APP but full functionality may only be achieved when the APP is on use.

5.3 SALES AND SERVICE TERMS

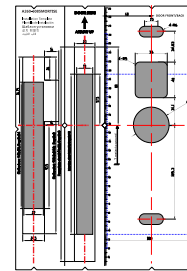
- Please read the manual carefully before use!
- Limited 1-Year Electronic Warranty Limited Lifetime Mechanical and Finish Warranty
This A260 product comes with a 1-Year Limited Warranty on Electronic Parts and a Limited Lifetime Mechanical and Finish Warranty against defects in materials and workmanship under normal use to the original residential user. Proof of purchase and ownership is required for the warranty to be in effect.
- Any change submit to our confirmation
- Any error or question in our manual or sales term, please feel free to contact with us.
- It is forbidden to copy our manual and for other usage, except the authorized company and users.
- For any wrong operation or installation to the user or third party, we do not responsible for the duty.
- For the damage caused by anthropic factor or inevitable reason, we do not pay for the loss or maintain for free, please check our after sale service terms.
- Please do not take apart the lock if you are not technician, if necessary, please make the operations under the guide of technician.
- Notice: there maybe a little difference for product pictures with real product, please subject to our real products. After changing the battery, please do not throw away the battery, kindly refund to recycle bin in case of pollution!

6 PREPARING TO INSTALL

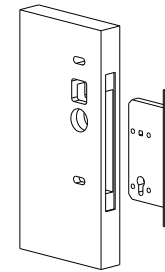
6.1 Line Drawing

Draw a horizontal center line inside and outside the door at 1 meter from the ground. Fold the hole template, make the handle center line align at the door horizontal center line, then draw out the hole lines at front and side.

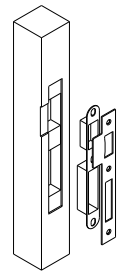
Drawing Center Line



Drill Hole with Template
Step 1



Test with Mortise
Step 2

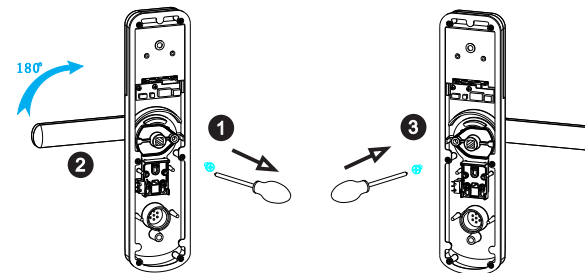


Drill hole for Strike
Step 3

6.2 Adjust Direction

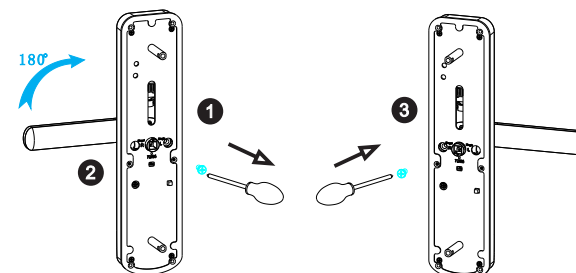
6.2.1. Adjust from Right to Left Direction (For Sample)

1. Use the allen key to take off the screw on the right position.
2. Turn the handle to 180 degree counterclockwise.
3. Tighten the screw in left position.



6.2.2. Adjust from Right to Left Direction (Back Panel)

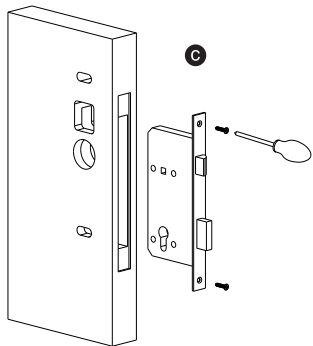
1. Use the allen key to take off the screw on the right position.
2. Turn the handle to 180 degree counterclockwise.
3. Tighten the screw in left position.



7 INSTALL THE LOCK

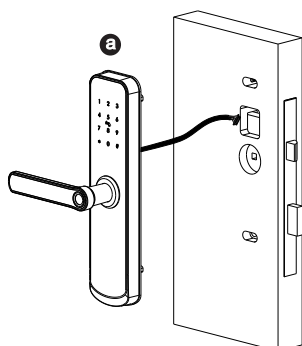
7.1 Assemble the Mortise

Assemble the mortise(c) into the slot which is drilled according to the template(45/85 Mortise).



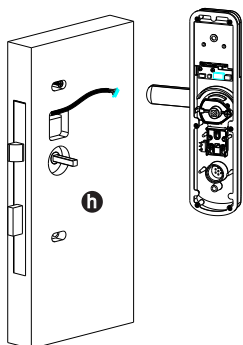
7.2 Assemble the Front Panel

Fix the front panel(a) on the door and cross the cable through the hole.



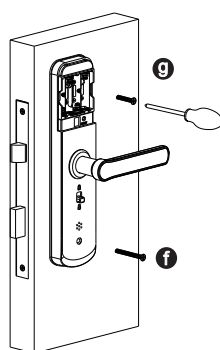
7.3 Connect the Cable

Insert the 70L spindle on mortise, cross the cable through the hole and connect with the PCB board.



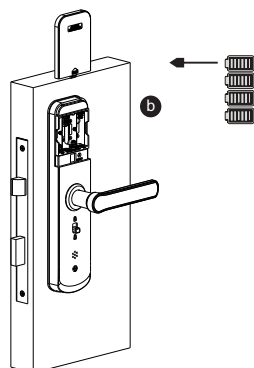
7.4 Fix the Lock Panel

Tight the back panel with front panel with the two long screws.



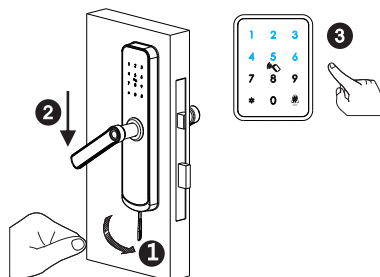
7.5 Assemble the Battery Box

Put 4pcs AA alkaline batteries and fix the battery box cover.



7.8 Adjust the Lock Panel

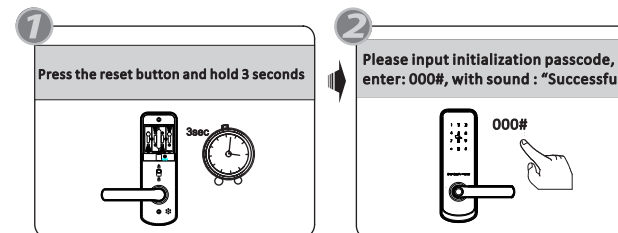
After finishing installation, please adjust the position of the lock panel or the screws whether it is too tight. Test with password: 123456 and turn the manual key and then press the handle to open.



OPERATION STEPS

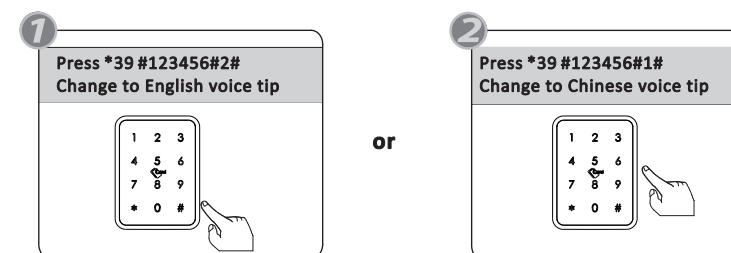
Please enroll the administrator before you start to use this lock. you can follow the operation steps as below:

1.Initialization



2.Change Language

Factory state: Default master passcode is:123456.

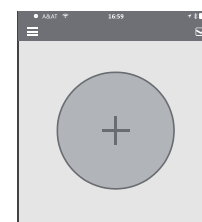
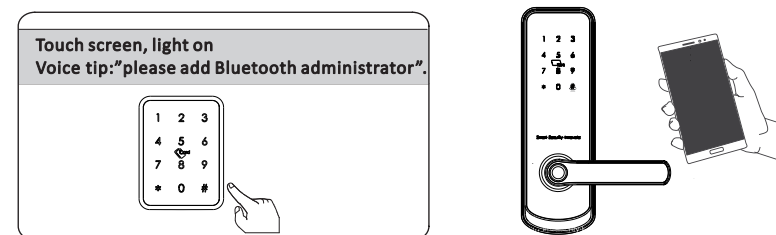


2.Enroll Mobile Administrator

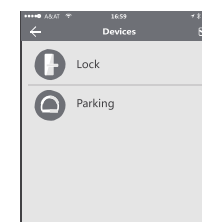
2.1 Factory state: press *12#123456#new passcode#new passcode#.

2.2 You can use the mobile APP to add the Bluetooth administrator.

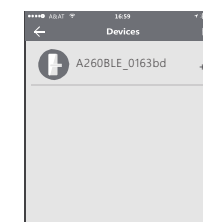
When adding the door locks, operations must be completed near the lock.



Step 1: Click "+" button



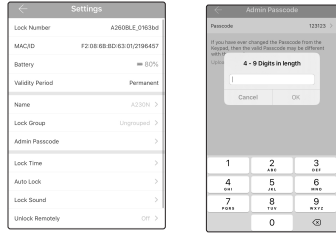
Step 2: Select the lock



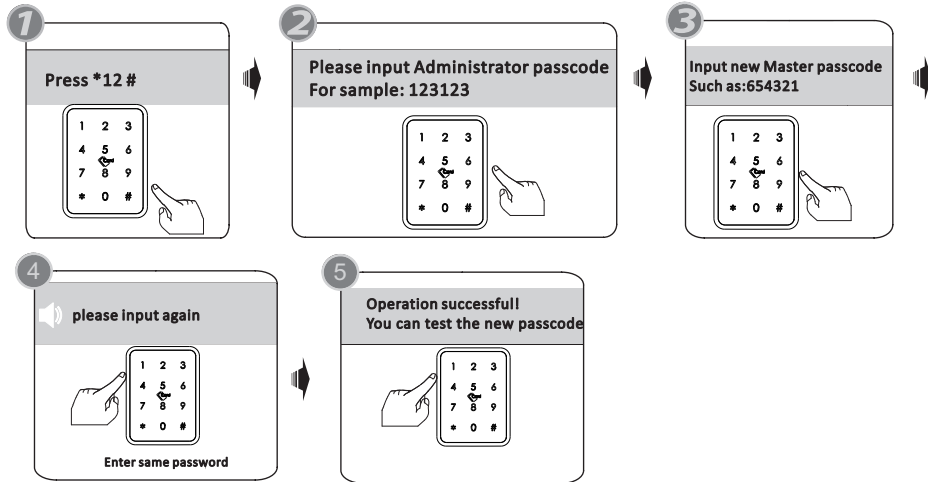
Step 3: Click the device name

3.Change Master Passcode

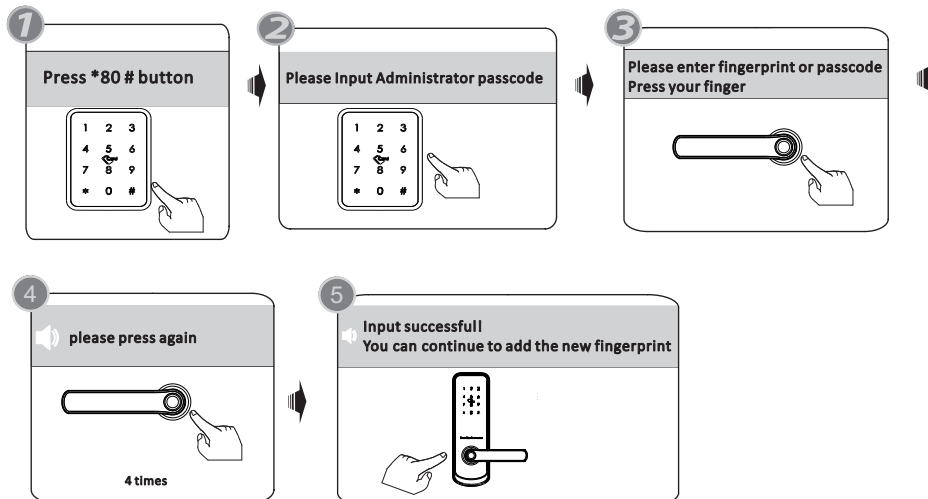
you can find the new master passcode in the mobile APP under "Settings".
also you can edit the master passcode on App directly and upload Admin passcode to the lock like the below photo.



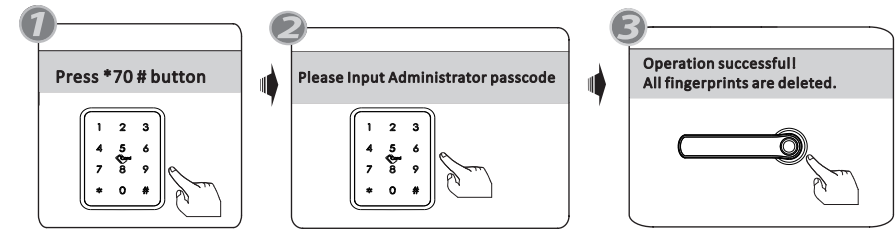
you can also change the master passcode on the lock directly.
Please find the operation steps below:



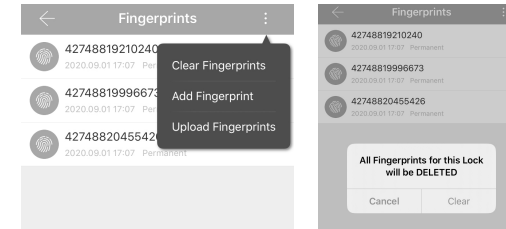
4.Enroll User Fingerprint



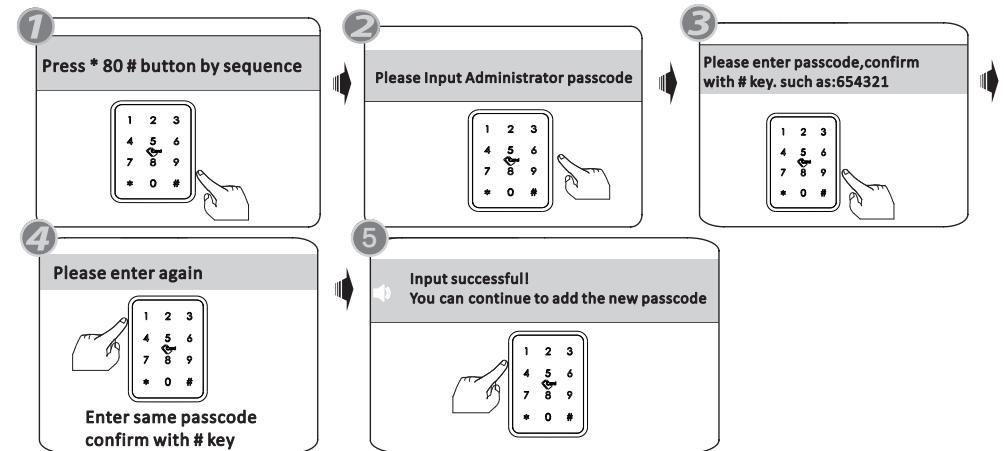
5.Delete User Fingerprint



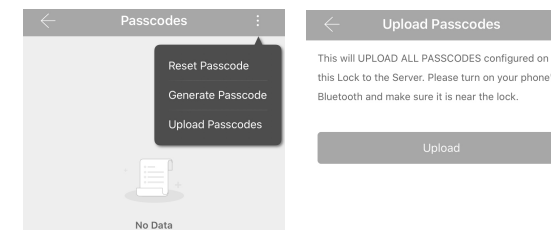
APP operation: you can deleted the added fingerprints one the lock and server.



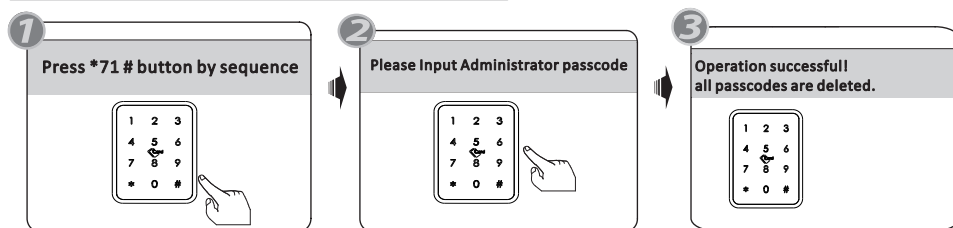
6.Enroll User Password



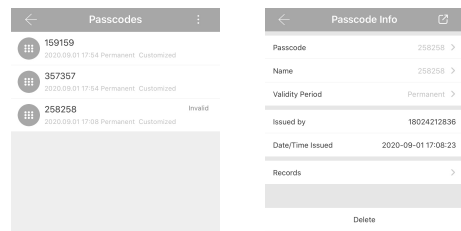
Under the mobile APP, you can upload the added passcodes to the lock and server.



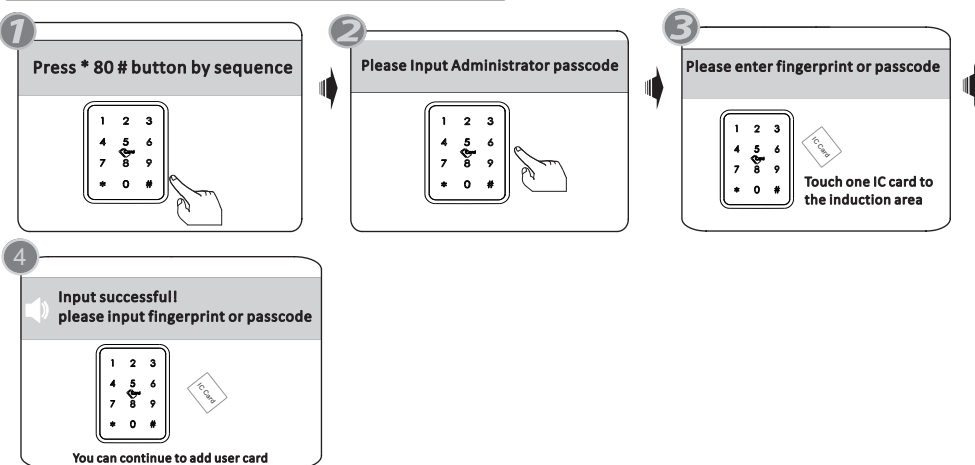
7.Delete User Passcode



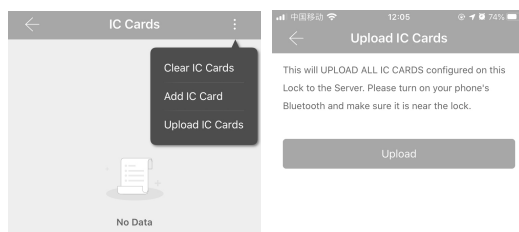
Under the mobile APP, you can find the added passcodes, you can edit any passcode and click Delete button to delete the passcode.



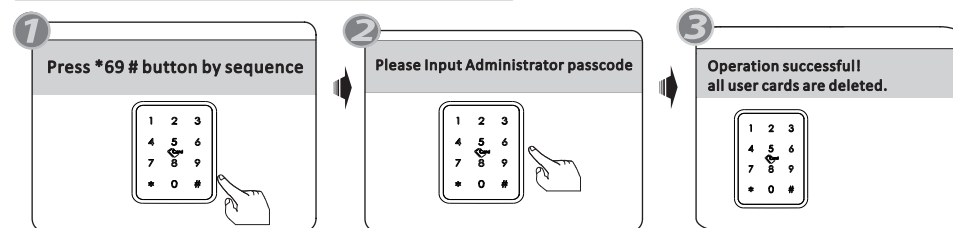
8.Enroll User Card



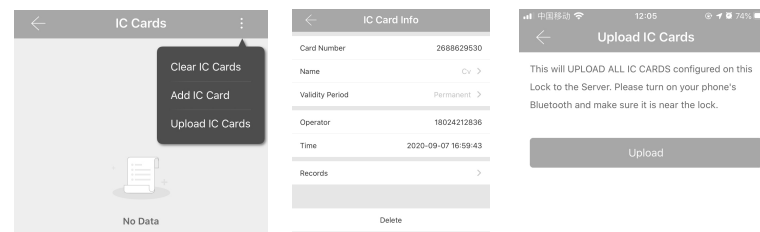
Under the mobile APP, you can upload the added cards to the lock and server.



9.Delete User Card

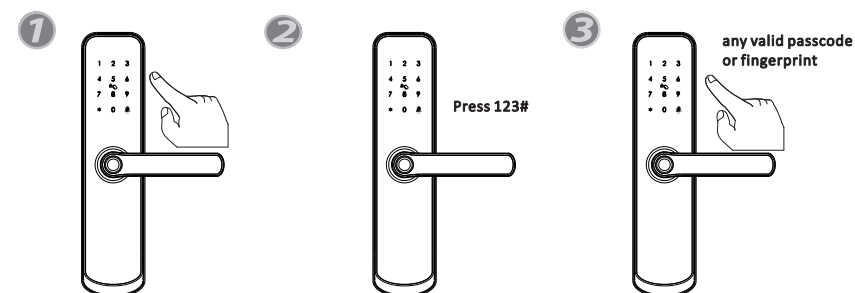


Under the mobile APP, you can find the added IC Cards, you can edit any username and click Delete button to delete the card, also you can choose upload IC Cards to ensure the card is deleted in the server.



10.Passage Mode

Unlock the door with any valid passcode or fingerprint.
Press 123# button during the time of unlocking.
Sound tip: the lock set to passage mode
Then the lock is under always open state, you can enter any valid passcode or fingerprint to cancel this function.



11.Unlock Records

You can find the unlock records for the passcode/IC Card/Fingerprint etc.
More details, you can refer the manual of our TTLOCK App operation steps.

