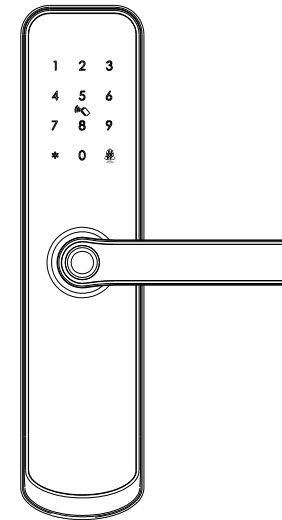


User Manual-Smart Digital Lock

TUYA PRO VERSION



Scan the QR code below to download the APP



Search Google Play or APPLE Store with Tuyasmart



IC Card



Password



Manual Key



APP



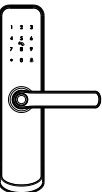
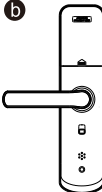
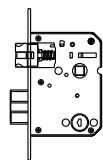
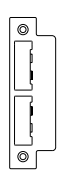


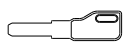




Fingerprint

Smart your life!

Version 2.2 Edition A260-2022

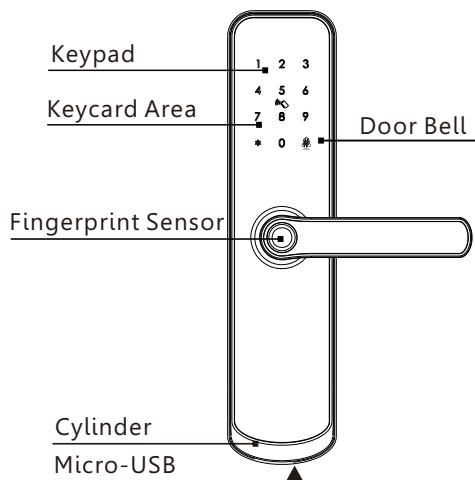
1 PACKING ACCESSORIES

Please check the packing box and accessories when you got the lock in hand.

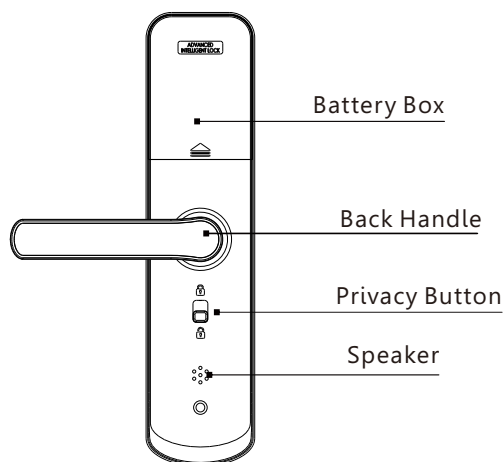
						
1 Pcs Front Panel	1 Pcs Back Panel	1 Pcs Mortise	1 Pcs Strike Plate	1 Pcs Strike Box		
Door Thickness Quantity	*f	*g	*h	*i		
					2Pcs Keycard	2 Pcs Manual Key
	35-39mm	M5x40:1	M5x20:1	8x8x60:1	4x20:4	
40-50mm	M5x50:1	M5x30:1	8x8x60:1	4x20:4		
51-60mm	M5x60:1	M5x40:1	8x8x80:1	4x20:4		

2 PRODUCT SPECIFICATION

Front Panel



Back Panel



PASSAGE MODE & BELL FUNCTION

Enter the valid password or touch the IC card or press the finger to open the door. Press the number "5#" to activate the passage function. The lock will be under always open state, you can press any valid password to cancel the passage mode.

Bell function: You can press the button "#" to ring the bell.

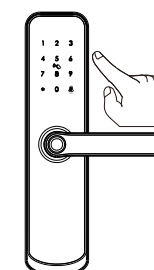
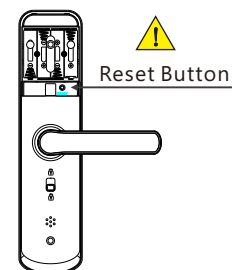
3 SYSTEM INTRODUCTION

Material	Aluminum Alloy,ABS,Arcylic
Color	Black/Satin Nickel
Door Thickness	35-60mm
Communication	Wi-Fi
Support OS	iOS 7.0 or above, Android 4.4 or above
Battery Life	(10-12 months) by 10 times normal unlock
Power Supply	DC6V:4pcs AA alkaline batteries
Static Current	<50uA
Dynamic Current	<200mA
Unlock Way	Fingerprint, IC Card, password,APP,manual key
Unlock Time	1~1.5 seconds
Working Temperature	-20~50 degree
Working Humidity	10%~95%
Factory Passcode	Factory master password:123456,after configuration,it will be invalid
Mortise Type	Support single latch, 5050/5572/5070/4585/6085/KS mortise
Virtual Password	Available
User Capacity	Card+Password+Fingerprint: 80 groups,9 groups administrators.

4 RESET TO FACTORY STATE

⚠ Attention

There is one Reset button on the back of rear panel, you can press this button for 5 seconds with sound tip, then the lock is under factory state, you can enter any 6 digits password or press finger to open the door.

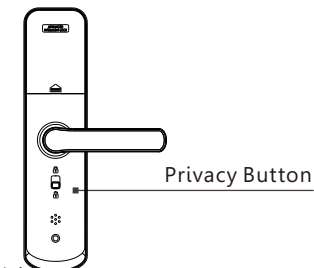


Factory password:
123456+# to unlock

DEAD LOCK FUNCTION

⚠ Attention

There is one privacy button on the back panel. You can pull upward this button with sound tip "Locked", then the lock is dead locked inside, only the administrator can access the door, other user password or card will be invalid. And you can pull downward the button one more time with sound tip "Unlocked" to cancel this function.



5 INFORMATION AND SAFETY WARNINGS:

5.1 Introduction

This user manual will guide you through the functions and usages of our A260 smart lock. It is important that you follow the instructions and regard all notes that appear throughout this manual. Consult this manual before you attempt to use this lock. If you have any questions that not answered by this manual or on need of non-routine service, please call our customer service hotline or send FAQ to us.

5.2 Safety Warnings:

⚠ When reading this manual, note these icons: notes with the icon Must be read, understood and obeyed to prevent injury or damage to the lock.

⚠ General Usage

- This lock shall only be used as described in this manual.
- Verify that all parts of the lock are accounted for. If any parts are missing, please contact our service person.
- There is protective film on the front touch panel, if there are some scratches on the film, please remove the film if you need.
- Please use 4pcs AA batteries. Do not mix old and new batteries or other Zn/Mn batteries. Never insert objects into the lock other than batteries as described in this manual.
- Verify all surfaces are flat and level before beginning installation, installation on doors or surface with any types of deformity such as gaps or warping may cause the lock to malfunction or fail to operate entirely.
- Never apply any cleaner directly to any part of this lock. Only use clean water or mild cleaner on a soft non-abrasive cloth when cleaning.
- The lock must be used with Tuyasmart APP. The lock will function without the APP but full functionality may only be achieved when the APP is on use.

5.3 SALES AND SERVICE TERMS

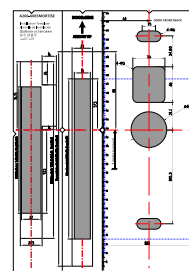
- Please read the manual carefully before use!
Limited 1-year Electronic Warranty Limited Lifetime Mechanical and Finish Warranty
- This A260 product comes with a 1-year Limited Warranty on Electronic Parts and a Limited lifetime. Mechanical and Finish Warranty against defects in materials and workmanship under normal use to the original residential user. Proof of purchase and ownership is required for the warranty to be in effect.
- Any error or question in our manual or sales term, please feel free to contact with us.
- For any wrong operation or installation to the user, we do not responsible for the duty.
- For the damage caused by anthropic factor or inevitable reason, we do not pay for the loss or maintain for free, please check our after sale service terms.
- Please do not take apart the lock if you are not technician, if necessary, please make the operations under the guide of technician.
- Notice: there maybe a little difference for product pictures with real product, please subject to our real products.
- After changing the battery, please do not throw away the battery, kindly refund to recycle bin in case of pollution!

6 PREPARING TO INSTALL

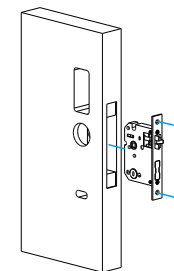
6.1 Line Drawing

Draw a horizontal center line inside and outside the door at 1 meter from the ground. Fold the hole template, make the handle center line align at the door horizontal center line, then draw out the hole lines at front and side.

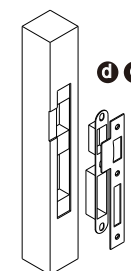
Drawing Center Line



Drill Hole with Template
Step 1



Test with Mortise
Step 2



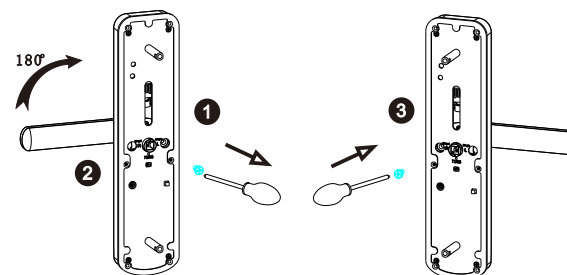
Drill hole for Strike
Step 3

6.2 Adjust Direction

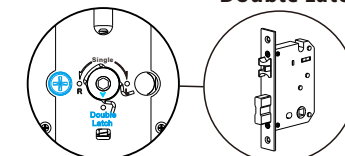
⚠ Make sure the arrow point to the right position according to the different mortise.

6.2.1. Adjust from Right to Left Direction (Front Panel)

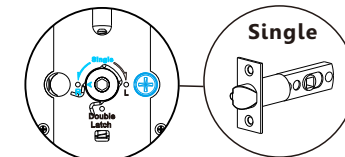
1. Use the allen key to take off the screw on the right position.
2. Turn the handle to 180 degree counterclockwise.
3. Tighten the screw in left position.



Double Latch

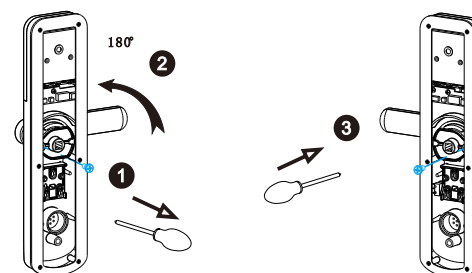


Single



6.2.2. Adjust from Right to Left Direction (Back Panel)

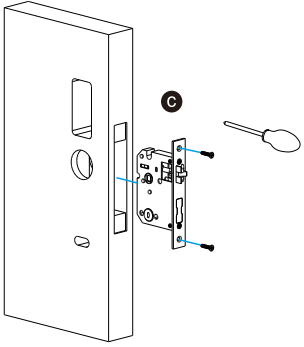
1. Use the allen key to take off the screw on the right position.
2. Turn the handle to 180 degree clockwise.
3. Tighten the screw in left position.



7 INSTALLATION STEPS:

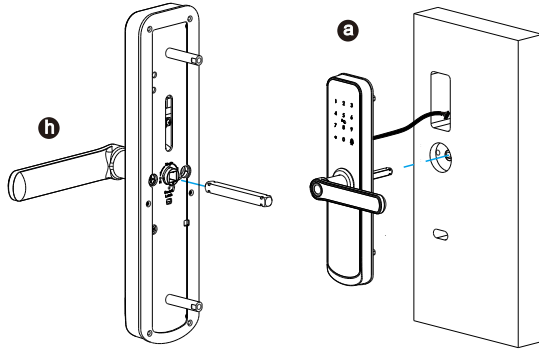
7.1 Assemble the Mortise

Assemble the mortise(c) into the slot which is drilled according to the template.



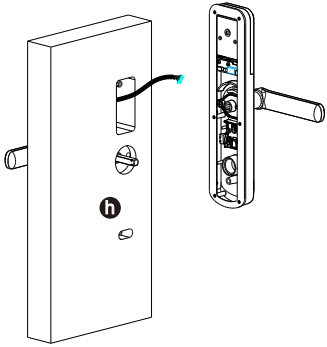
7.2 Assemble the Front Panel

7.2.1 Press hard the spindle (h) into the handle hole.
7.2.2 Fix the front panel(a) on the door and cross the cable through the hole.



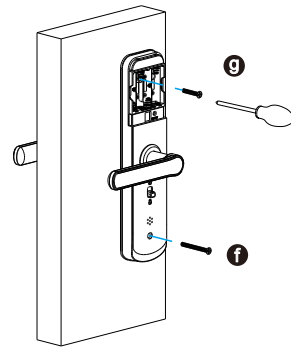
7.3 Connect the Cable

Insert the 70L spindle on mortise, cross the cable through the hole and connect with the PCB board.



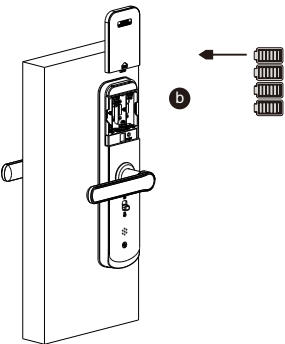
7.4 Fix the Lock Panel

Tight the back panel with front panel with the two long screws.



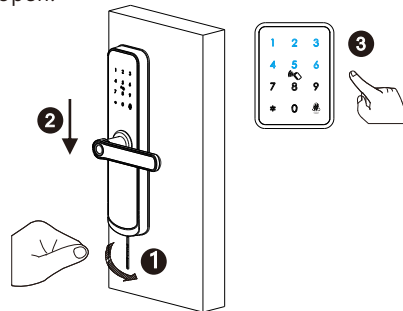
7.5 Assemble the Battery Box

Put 4pcs AA alkaline batteries and fix the battery box cover.



7.6 Adjust the Lock Panel

After finishing installation, please adjust the position of the lock panel or the screws whether it is too tight. Test with password: 123456 and turn the manual key and then press the handle to open.



OPERATION STEPS

Please notice: it is a must to enroll the new administrator before you start to use this lock. if not you can not configure the lock with Wi-Fi feature. you can follow the operation steps as below:

1.Initialization

1 Press the reset button and hold 5 seconds

2 Initialization Successful

2.Enroll Master Password

1 Press * and # button

2 Please enter administrator fingerprint, tag or password

3 Enter default Master password:123456+#

4 Press 1 to set administrators
Press 2 to set regular users
Press 3 for system settings
Press 4 to restore factory setting

5 Press 1 to add administrators
Press 2 to delete administrators
Press 3 network settings

6 Please enter administrator fingerprint, tag or password

Enter 4-8 digits new password,press # to confirm

7 Please enter administrator fingerprint, tag or password







Enter same password
Press # to confirm

8 00x, Input successful!
please enter administrator fingerprint,tag or password

You can continue the operation to add master password

- ⚠ Notice: the administrator can be password/ fingerprint or IC card,you can set according to your own requirement, total 9 administrators.
- ⚠ Notice: Press # key to confirm, press * to back to previous step, lock will exit the setting if there is no operation during 10 seconds.
- ⚠ Notice: After 5 times wrong unlock, the keypad will be locked for 60 seconds, there is no reaction for any operation during these time.







3.Delete Master Password


- 1 Press * and # button

- 2 Please enter administrator fingerprint, tag or password

- 3 Enter Master password, press # to confirm

- 4 Press 1 to set administrators
 Press 2 to set regular users
 Press 3 for system settings
 Press 4 to restore factory setting
 Press 1
- 5 Press 1 to add administrators
 Press 2 to delete administrators
 Press 3 network settings
 Press 2
- 6 Please enter user serial no.


Enter serial No. 001-009
press # to confirm
- 7 Operation Successful!

You can continue the operation to delete master password

4.Enroll User Password





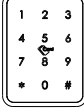
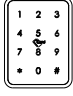
- 1 Press * and # button

- 2 Please enter administrator fingerprint, tag or password

- 3 Enter Master password, press # to confirm

- 4 Press 1 to set administrators
 Press 2 to set regular users
 Press 3 for system settings
 Press 4 to restore factory setting
 Press 2
- 5 Press 1 to add regular users
 Press 2 to delete regular users
 Press 1
- 6 Please enter fingerprint, tag or password


Enter 4-8 digits password,
press # to confirm
- 7 Please enter again


Same password,confirm with #
- 8 01x,input successful!
 Please enter fingerprint, tag or password

You can continue the operation to issue user password



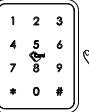
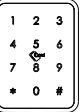
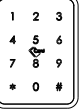

5.Delete User Password

- 1 Press * and # button

- 2 Please enter administrator fingerprint, tag or password

- 3 Enter Master password, press # to confirm

- 4 Press 1 to set administrators
 Press 2 to set regular users
 Press 3 for system settings
 Press 4 to restore factory setting
 Press 2
- 5 Press 1 to add regular users
 Press 2 to delete regular users
 Press 2
- 6 Press 1 to delete user No.
 Press 2 to delete all
 Press 1

Enter serial no. like 011,
press # to confirm
- 7 Operation Successful!

You can continue the operation to delete user password

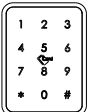
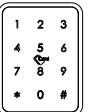
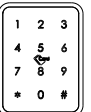

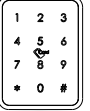
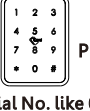
6.Enroll User Card

- 1 Press * and # button

- 2 Please enter administrator fingerprint, tag or password

- 3 Enter Master password, press # to confirm

- 4 Press 1 to set administrators
 Press 2 to set regular users
 Press 3 for system settings
 Press 4 to restore factory setting
 Press 2
- 5 Press 1 to add regular users
 Press 2 to delete regular users
 Press 1
- 6 Please enter fingerprint, tag or password


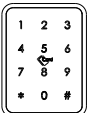
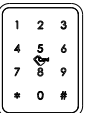
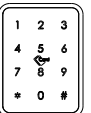

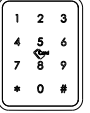
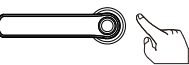
Touch one IC card to the induction area
- 7 01x,input successful!
 Please enter fingerprint, tag or password

You can continue the operation to add user cards.



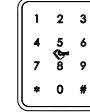
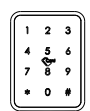


7.Delete User Card

- 1 Press * and # button

- 2 Please enter administrator fingerprint, tag or password

- 3 Enter Master password, press # to confirm

- 4 Press 1 to set administrators
 Press 2 to set regular users
 Press 3 for system settings
 Press 4 to restore factory setting
 Press 2
- 5 Press 1 to add regular users
 Press 2 to delete regular users
 Press 2
- 6 Please enter user serial no.
 Press 1
 Enter serial No. like 012, press # to confirm
- 7 Operation Successful!
 You can continue the operation to delete user cards




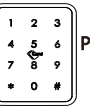
8.Enroll User Fingerprint

- 1 Press * and # button

- 2 Please enter administrator fingerprint, tag or password

- 3 Enter Master password, press # to confirm

- 4 Press 1 to set administrators
 Press 2 to set regular users
 Press 3 for system settings
 Press 4 to restore factory setting
 Press 2
- 5 Press 1 to add regular users
 Press 2 to delete regular users
 Press 1
- 6 Please enter fingerprint, tag or password
 Press your finger on the sensor area 4 times
- 7 01x,Input successful!
 Please enter fingerprint, tag or password
 You can continue the operation to issue user fingerprint

9.Delete User Fingerprint

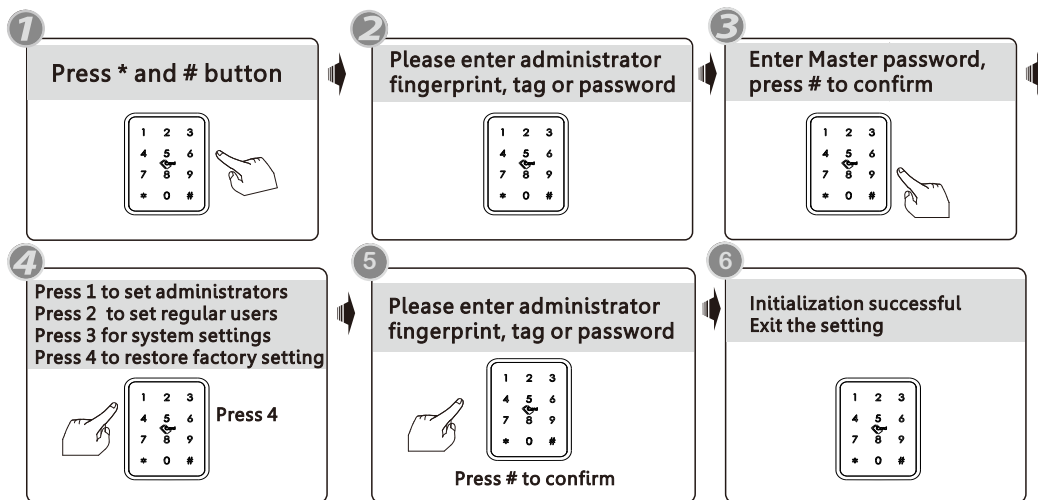
- 1 Press * and # button

- 2 Please enter administrator fingerprint, tag or password

- 3 Enter Master password, press # to confirm

- 4 Press 1 to set administrators
 Press 2 to set regular users
 Press 3 for system settings
 Press 4 to restore factory setting
 Press 2
- 5 Press 1 to add regular users
 Press 2 to delete regular users
 Press 2
- 6 Press 1 to delete user No.
 Press 2 to delete all
 Press 1
 Enter serial no. like 013, press # to confirm
- 7 Operation Successful!
 You can continue the operation to delete user fingerprint

10.System Setting

- 1 Press * and # button

- 2 Please enter administrator fingerprint, tag or password

- 3 Enter Master password, press # to confirm

- 4 Press 1 to set administrators
 Press 2 to set regular users
 Press 3 for system settings
 Press 4 to restore factory setting
 Press 3
- 5 Press 1 for voice setting
 Press 2 for unlock mode
 Press 3 to select language
 Press 4 to set time
- 6 Press 1: Disable or enable the sound tip.
 Press 2: Single authentication or double authentication
 Enable/disable passage mode.
 Press 3: Choose English or Chinese
 Press 4: Change lock time

You can make the settings following the sound tip for the unlock type /Language/Lock time etc, these functions are designed for some special conditions.

11.Reset Setting



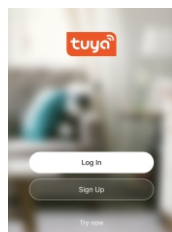
Notice: Above are the standard operation for the lock with password and keycard function. If you need to use the remote unlock function, you shall use the Tuya smart app to connect the device and make the settings accordingly.

12.Tuya APP Settings

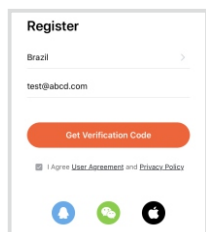
Please download the Tuya smart or Smart life on Apple store or Google play. also you can scan the QR code below to download the APP directly.



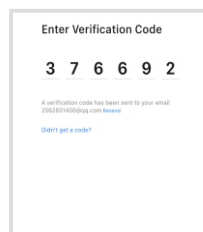
12.1 Please register one account with your E-mail or mobile number.



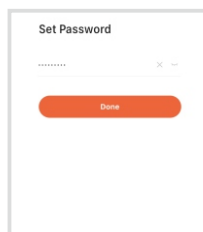
12.2.1 Sign Up



12.2.2 Enter mobile or mail Get Verification Code

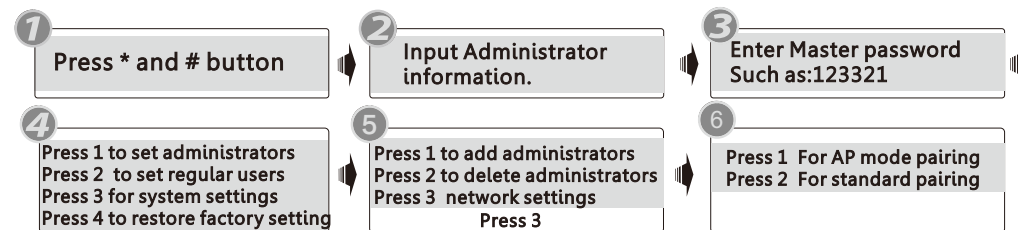


12.2.3 Enter the code sent to your mail or mobile



12.2.4 Set password and login

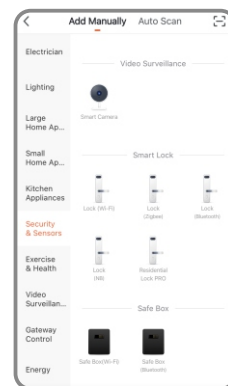
12.2 Network Setting



Notice: There are two type of connections under the manual: AP mode pairing and standard pairing or Bluetooth connection (dual module).

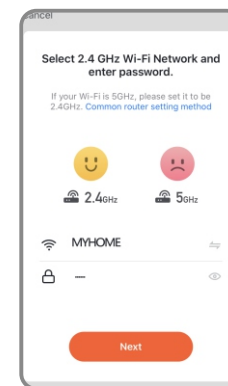
12.3 Standard Pairing (EZ mode)

Please run the Tuya smart APP and choose the WiFi lock under the "Security&Sensors". please ensure the privacy button is under unlock state, if it is under lock state, you can not configure the Wi-Fi connection.



Step 1

Choose the Lock (WiFi) under the category "Security&Sensors"



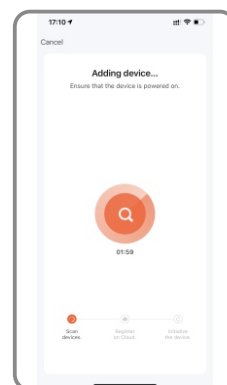
Step 2

Enter the password of the WiFi and click Next.



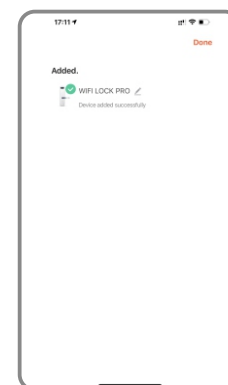
Step 3

Confirm the number 5 blinking rapidly, and click Next.



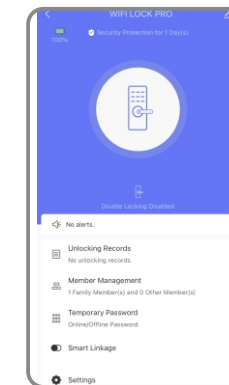
Step 4

Scan the device



Step 5

Add device successfully

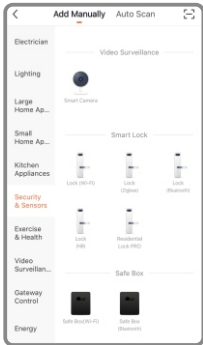


Step 6

Interface, can edit lock name

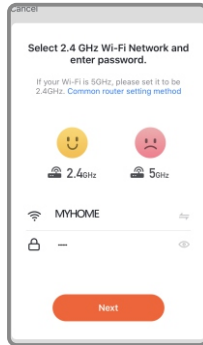
12.4 Hotspot Connection(AP mode)

Please run the Tuya smart APP and choose the WiFi lock under the "Security&Sensors". please ensure the privacy button is under unlock state, if it is under lock state, you can not configure the Wi-Fi connection.



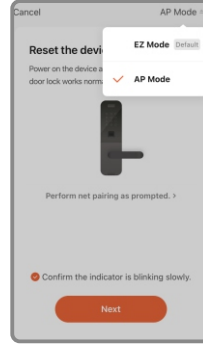
Step 1

Choose the Lock(WiFi) under the category "Security&Sensors"



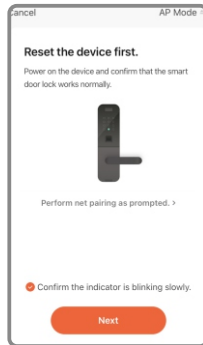
Step 2

Enter the password of the WiFi of your home and click Next.



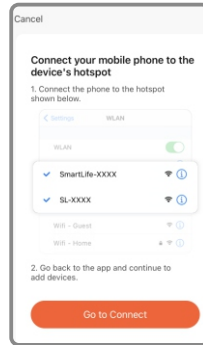
Step 3

Choose AP mode under the right top option



Step 4

Confirm the number 5 blinking rapidly, and click Next.



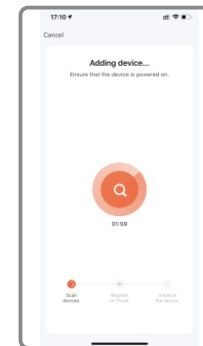
Step 5

Connect the hotspot of mobile click Go to Connect



Step 6

Find the SmartLife-xxx and connect



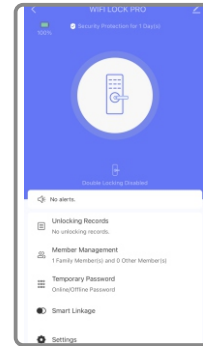
Step 7

Scan the device



Step 8

Add device successfully



Step 9

Interface,can edit lock name

12.5 Quick Connection by BLE

This is one extra way for connection by BLE. This operation shall be done for the lock that under AP or EZ mode state(Number 5 flashing). there is one window pop up as below:



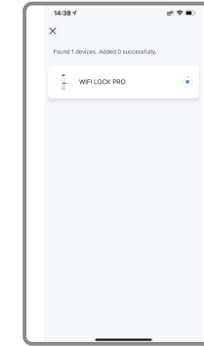
Step 1

Pop up the window with device to add



Step 2

Enter the Wi-Fi password and click Next.



Step 3

Place mobile near the router and register lock to cloud

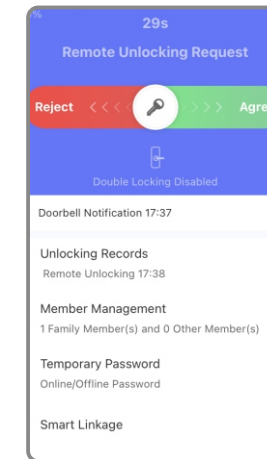
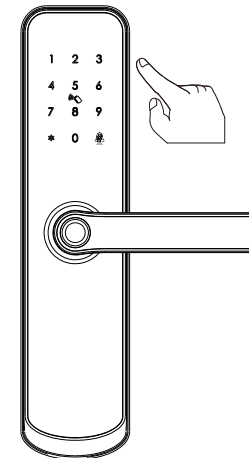


Step 4

Connected

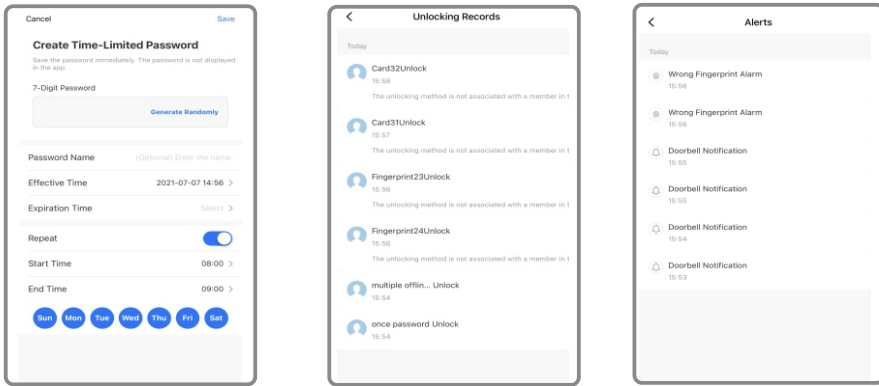
12.6 Remote Unlock Function

When the visitor press the number 9# by sequence, there is one remote unlock request send to the administrator in the App as the photo, you can press the "Agree" to unlock the door or reject to cancel the operation.



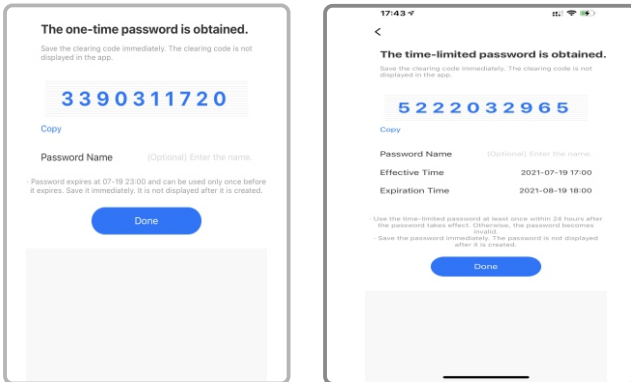
12.7 Online Password Function

When the visitor visit your office or home, you can generate the temporary password with valid time period, refer the below operation step. Also you can check the unlock record in the APP window.



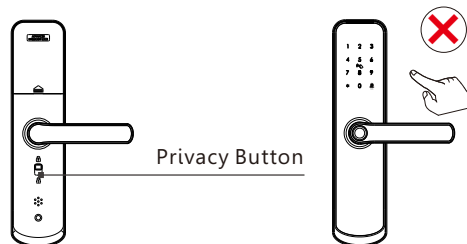
12.8 Offline Password Function

There is one-time password and time-limited password for offline type passwords. you can choose to generate the one-time password like below, it is only valid for 6 hours, and time-limited password within 24 hours before it expires, please use this password on the lock before it expires.



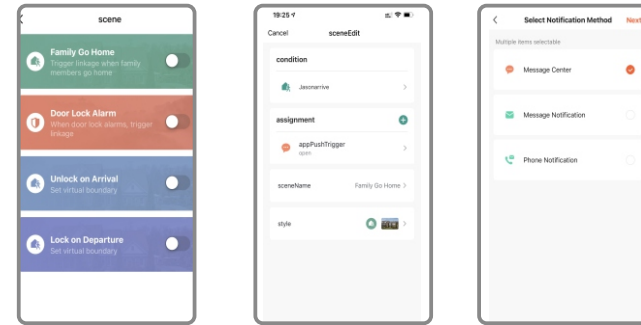
The one-time password and time-limited password for offline type password can not work when the lock is under dead lock state, only the administrator (fingerprint/password or card user) can access during this state.

Attention

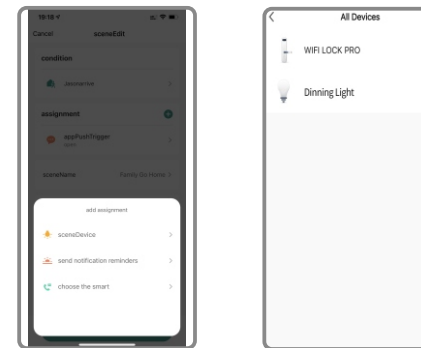


12.9 Smart Linkage Function

You can choose the feature and message notification method upon the using condition. Such as family go home/door lock alarm/unlock on arrival/lock on departure.



There is also one smart linkage feature with your smart Tuya products. You can click the assignment and find the scene device, under this option, you can link other tuya smart devices together, for sample the LED bulb, when you press the handle to unlock the door at night time, the LED bulb light will turn on together.



Kind Reminder

Under factory state: default master password is **123456**. you shall change this master password to make the network setting, you can not configure the lock with tuyasmart under the factory state with the password: 123456! And the privacy button shall be under unlock state too!

