

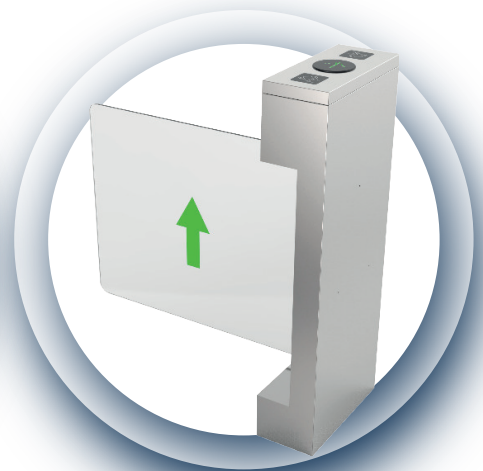
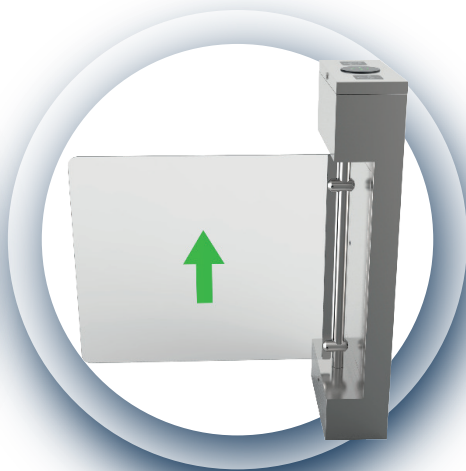
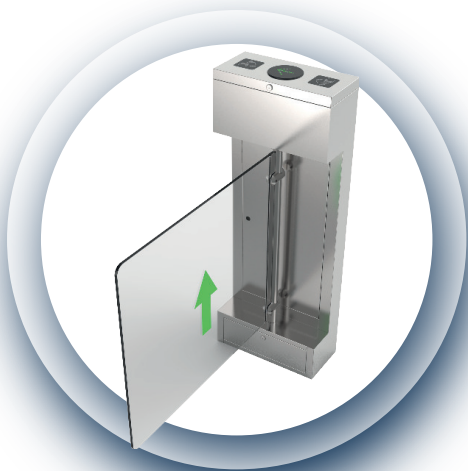
D-FORCE INOX C90

ELECTROMECHANICAL SWING GATE

D-FORCE INOX C90 gate has a compact design, which saves a lot of space. It can work in combination with various access control systems, or it can be controlled with a remote control or a button if desired. Its thick plexiglass handle is impact resistant and does not break easily.

It has a powerful motor that can carry the weight of the arm and is tested to be opened 3 million times on opening and closing, so it is ideal for intensive use areas. Also the modern design adds elegance to the area where it is used. When the gate is opened, it leaves a 90 cm clear transition area and can easily pass disabled vehicles such as wheelchairs. It can be operated in combination by adding a tripod and quick turnstiles to the sides.

Gate has two plastic covers on it and allows you to easily mount the access control device. Opening and closing times of the VIP door can be adjusted. Suitable for heavy transitions, the gate works quietly and quickly.



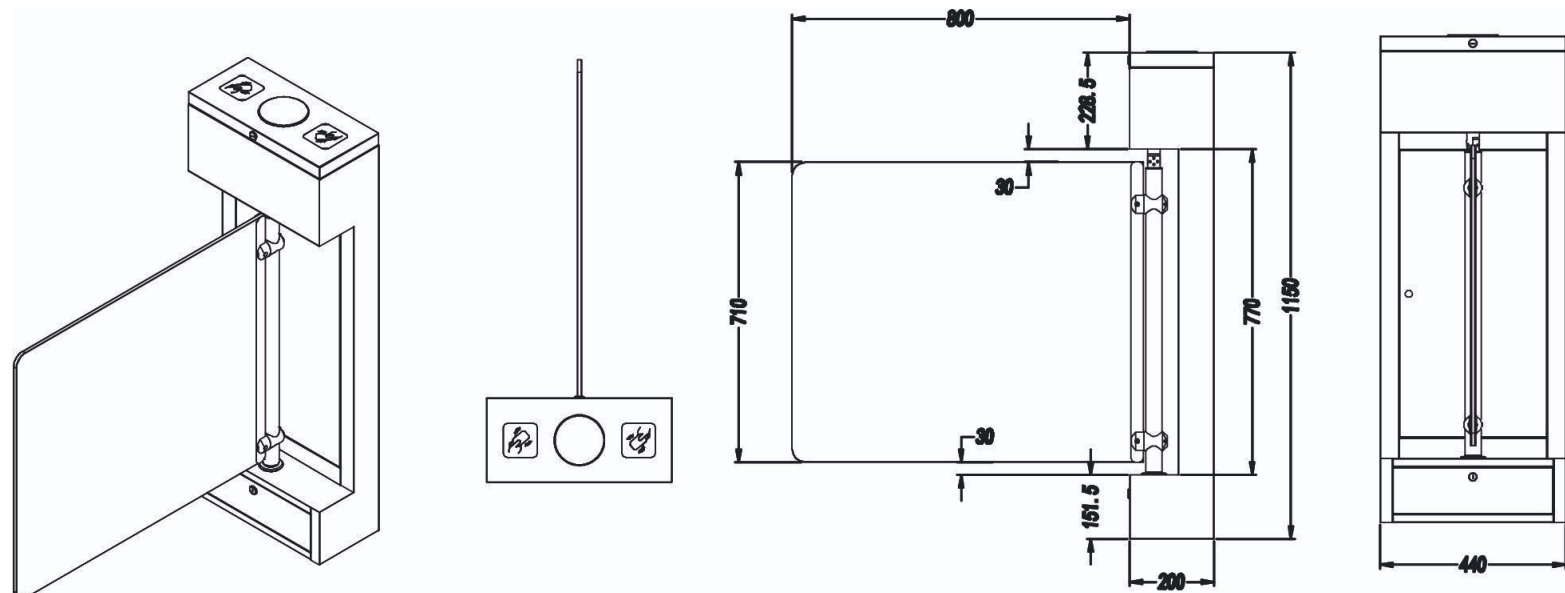
D-FORCE



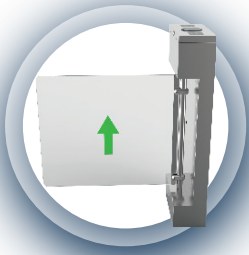
Technical Specifications

Body	AISI 304 quality stainless steel
Sleeves	AISI 304 quality stainless steel and plexiglass
Crossing Distance	80+10cm
Tripod Locking	Allows passage only when Solenoid is pulled
Transition Direction	It can be adjusted as desired as only entrance, only exit or transition to both directions.
Transition Time	Can be adjusted as desired
Transition Warning	Gives visual and audible warnings
Transition Information	NC: Normally closed or NO: Normally open
Transition Speed	~70 people/minute
Access Control	Single pass in set direction, single pass in two directions, free pass, always locked or free
Operating voltage	220/240V
Power consumption	24W
Frequency	50-60Hz
Usage Area	Indoor and Outdoor
Operating temperature	-25 to +70 Degrees
Test Result	Tested 3 Million passes
Weight	Approx. 35kg
Board Dimensions	440 x 200 x 1150mm
Access Control	It can work together by receiving signals from fingerprint, face recognition, vein recognition and card readers.
Certificates	ISO, CE and Warranty certificate

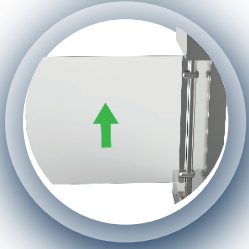
Technical drawing



Advantages



The handles, together with its interior and exterior parts, are made of 304 quality stainless steel, durable and long-lasting.



The most effective closing time can be set as desired with the adjustable closing time after the VIP turnstile is opened for passage.

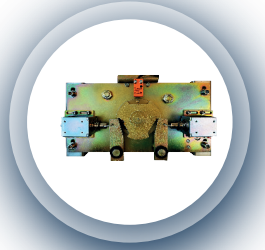


Ergonomic plexi design facilitates face recognition, fingerprint reading and card reader usage.

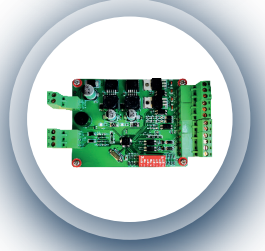


It has an ideal design for indoor and outdoor spaces.

Thanks to its patented lubrication system, it minimizes the need for maintenance.



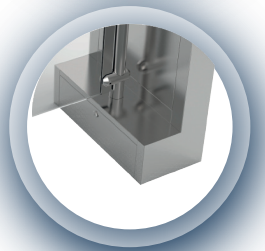
It has high quality PCB and electronic components. It works without being affected by environmental electromagnetic noise.



It eliminates confusion by guiding in the direction of the passage with bright LED signs.



Thanks to the horizontal surface at the ground mounting point, the turnstile works without shaking in transitions.



Usage areas:

- Factories
- Hospitals
- Business centers
- Dining Halls

- Airports
- Logistics Fields
- Educational institutions
- Gyms

- Public institutions
- Chain Stores
- Hotels
- Event Spaces

- Plazas
- Residences
- Military Fields
- Fair Entrances

- Smart Buildings
- Dams
- Shopping malls
- Public Transport Stations

D-FORCE

