

Operational Guidelines

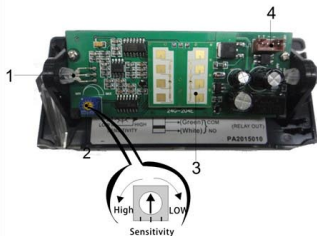
M-204 Microwave Sensor

Make your choice.....

1 Safety Guide

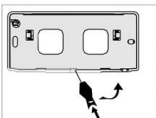
Related components must have a separation of electrical safety devices with low voltage protection operating conditions. All installation and maintenance work must be carried out by the professionals.

2 Name of the components

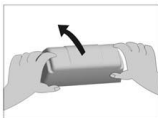


1. Luminous diode
2. Sensibility adjust screw
3. MDU sensor module
4. Wire plug

3 Open the shell

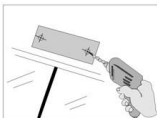


Not being installed

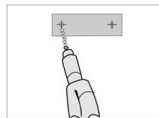


Being installed on the wall

4 Drilling



Installing on wall, use the attached template to drill holes.



Installing on ceiling, use the attached template to drill holes.

5 Fixing

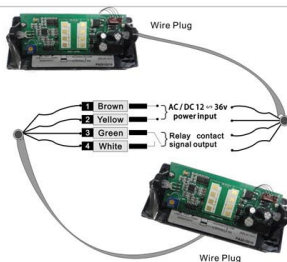
The screws are pre-placed on the bracket



Remove the screws, fixed the main sensor body on the wall.



6 Wiring diagram



7 Operating



When the power be offered, microwave sensor starts to detect the environment around.

Keep the microwave sensor beyond the detection area for 5s.

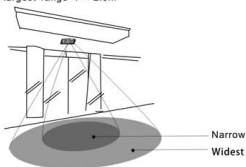


Stand at different position to detect the detection area.

8 Adjust the detection area

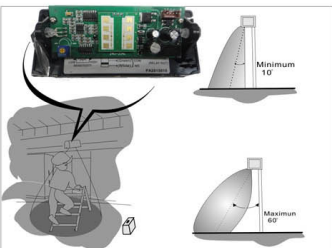
Sensibility adjuster screw to adjust the detection area.

- ☒ The smallest range $1.5 \times 1.0\text{m}$
- ☒ The largest range $4 \times 2.5\text{m}$



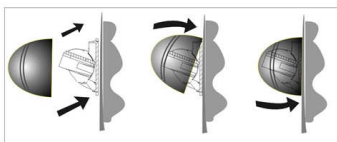
The maximum installation height is 4m.
Note: The lower the temperature is, the wider detection area is.

9 Adjust the detection position

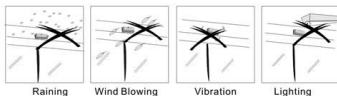


Rotate the bracket of microwave sensor to form an angle(10-60 degree) between the MDU sensor module and installation wall in order to adjust the detection area.

10 Covering



11 The possibility of interference



12 The technical details (Order Code: C915603)

Power Supply	AC/DC 12~36V
Current consumption	Static Current 45mA Action Current 105mA
Environmental temperature	-20℃ ~+60℃
Environmental humidity	0-90%, without condensation
Wave form	X-Band 24.174 GHZ
Output	≤20dBm
Relay output	N.O.-point output (Relay)
Maximum voltage	48V AC/DC
Maximum current	0.5A AC/ 1.0A DC
Minimum switching power	1mA
The largest power switch	55VA/24W
Weight	220g
Protection level	1P 54
Size	131L×61W×46H (mm)