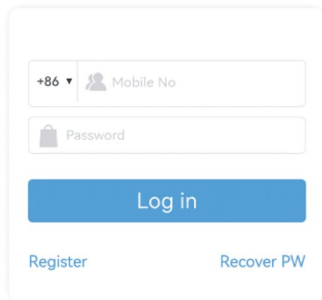
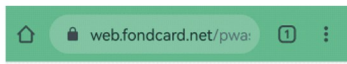
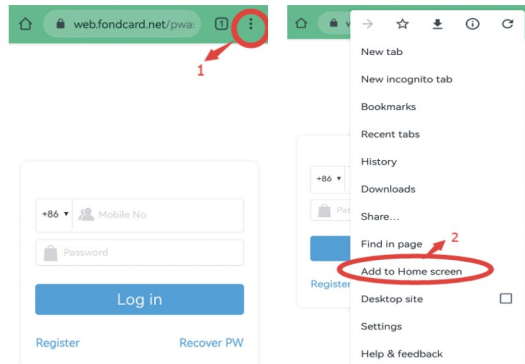


“Quickopen”APP mobile browser to Creat homescreen shortcuts steps

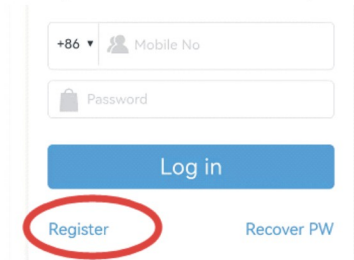
1. Open google browser, input <https://web.fondcard.net/pwas/index.html/> to browser search box, enter the quickopen login interface as below:



2. Creat homescreen shortcuts



3. Register, input the mobile number and password



Card or password press 4, 0 → press “ENT” → press “9” to exit (this is the factory default mode)

Card and password press 4, 1 → press “ENT” → press “9” to exit

Password press 4, 2 → press “ENT” → press “9” to exit

(6) Key “5”: Door open time setting

Press “5” → input time → press “ENT” → press “9” to exit

Note: ① The time format is “***”, e.g. “03” represents that the open time is 3 seconds.

② when time is set as 99 seconds; the open method is trigger mode (scan card and the door open, scan the card again, then the door close.

(7) Key “6”: setup the door open password (the factory default open password is blank)

Door open password setting press “6” → input the new password → press “ENT” → input password again → press “ENT” → press “9” to exit

Blank password setting press “6” → press “ENT” → press “ENT” → press “9” to exit

Note: ① This password can be used in Card or Password Mode and Password Mode. And it must have 6 digits.

② If it is blank password setting, the password mode cannot be used. (Cannot open the door via password.)

3. The exit key is “9”

4. The doorbell key is “DOORBELL”

5. Modify card password

(should operate in the Card and Password Mode)

Press “9” (the Blue light is off and the green light is on) → scan the card (must be authorized cards) → input the original password

(the original password is 888888) → press “ENT” → input new password → press “ENT” → input password again → press “ENT”

Note: ① this password is only valid in Card and Password Mode.

② If modify successfully, the buzzer makes 2 “di-di” short sounds, then it will exit the Program Mode.

6. Restore to factory default settings

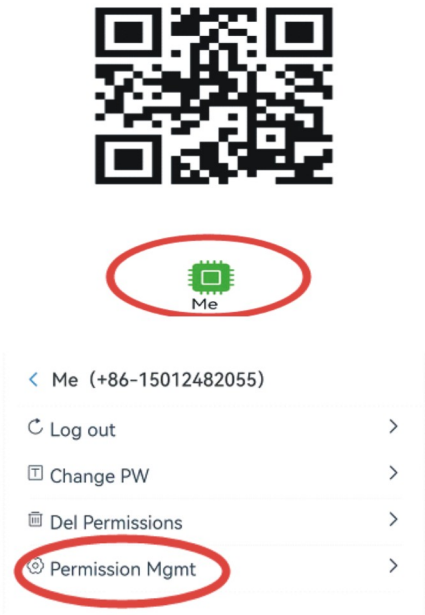
(only restore the program passwords and parameter settings, and authorized cards will not be deleted) K14 reset button, press K14, then power on, after hearing 2 “di-di” sounds, release the K14 button, restore to factory successfully.

4.Login, get this Door Opening QR Code



5.Click Me, can get the management QR code, change password, delete permission

Door Opening QR Code



Dynamic QR Code Standalone Controller Special function

Scan the App "quickopen-Me-Permission Mgmt-Mgmt QR code" 3times continuously, Buzzer make long sound, the device enter special mode, green light flash each second, if it's registered QR code, it will open the door, if it's unregistered QR code, will register first, then open the door, under this special mode, if you scan the "quickopen"-Me-Permission Mgmt-Mgmt QR code" again, it will exit the special mode, This mode is mainly convenient for customers to automatically register door opening users when they first use the QR code standalone controller.

Dynamic QR Code Standalone Controller (non-keypad)

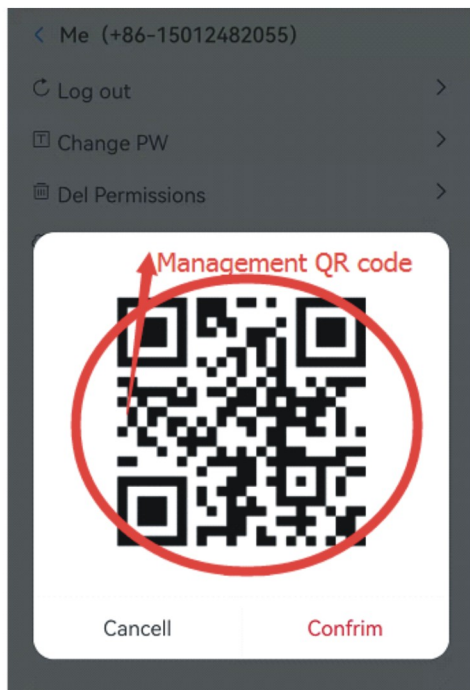
The management mode is as below:
The first scanned QR code in the app for the device is set as an administrator and has management authority. At the same time, this QR code has the permission to open the door.

Add process

Scan the App "quickopen-Me-Permission Mgmt-Mgmt QR code", green light always on, the device enter management mode, scan other mobile's App "quickopen"-QR Code, user added, if need add continuously, just scan the mobile's App "quickopen"-QR Code continuously. Scan again the administrator App "quickopen-Me-Permission Mgmt-Mgmt QR code" exit the add process.
If the QR code is not scanned within 20 seconds, will exit the add process automatically.

Delete process

Scan the App "quickopen-Me-Permission Mgmt-Mgmt QR code", green light always on, the device enter management mode, App "quickopen→me→ Del permissions→input mobile number→confirm→ generate QR code scan this QR code→ delete this user's permission.
If delete permission continuously, input other user's mobile number→confirm→generate QR code→ scan this QR code→delete this user's permission. Scan again the administrator App "quickopen-Me-Permission Mgmt-Mgmt QR code" exit the delete process.



Instruction	Red light	Green light	Buzzer
Work Status	On		
Program mode		On	
Program mode sub-menu		On	
Scan unregistered card	On		Long sound di
Scan registered card		On	2 short sound "di di"
After scan card need input password open door	Blue light and green light are at interval flash		
Card+Password mode	Blue/Green Flash every 0.5 second		
Password mode	Blue/Green Flash every 0.5 second		
Press keypad			Short sound "di"
Setting Successful			2 short sound "di di"
Setting Failure			Long sound di
Invalid input			Long sound di
Alarm			Continuous sound "di di di di..."

Operation Instruction

1. Enter Program mode

Press 'ENT' 4 times → input password "123456" → press "ENT" (enter the program mode successfully)

Note: ① "123456" is default password.

② If entering the program mode successfully, the buzzer will make two short sound "di di", otherwise, make a long sound "di".

Note: When there is no QR code in the device, the first QR code scanned by the device has management functions and has the permission to open the door.

The administrator function cannot be delete by key 8 functions and App "quickopen del permission, need reset button to delete.

Dynamic QR Code Standalone Controller(with keypad)

Support App "quickopen "

Key 7, add QR code

(Operation under management mode)
Press 7 → open App "quickopen" → Align the QR code with the device to scan the code → add successfully → press 9 exit.

Key 8 delete QR code

(Operation under management mode)
Single delete, press 8 → input mobile number → ENT → delete successfully → ENT → press 9 exit.
Continuous delete, press 8 → input mobile number → ENT → input mobile number → delete successfully → ENT → press 9 exit.

Access controller wiring instruction

6-pin wire

Red	+12V	Power
Black	GND	
Green	OPEN	Exit button
Black	NO	Relay signal output
White	COM	
Yellow	NC	

8-pin wire

Red	+12V	Power
Black	GND	
Green	OPEN	Exit button
Black	NO	Relay signal output
White	COM	
Yellow	NC	
Blue	BEEP	Doorbell
Yellow	BEEP	

Door bell connection structure



2. Function setup (All the following steps should begin with Entering Program Mode)

(1) Key "0": modify program password

Press "0" → input new password → press "ENT" → input the new password again → press "ENT" → press "9" to exit

Note: ① If add successfully, the buzzer will make two short sound "di di", otherwise, make a long sound "di".

② The password is 6-digits.

(2) Key "1": register cards in continuous way

Press "1" → continuously scan the unregistered card → press "ENT" to confirm → press "9" to exit

Note: ① The system will give a number to each card.

The original password is "888888". Such password can only be used for Card and Password Mode.

② If there is no card in the system, the card number will start from "0001" and increase gradually.

The largest number cannot exceed "6399". If there are registered cards exist, the number will superposition the number of previous registered cards (including the deleted cards).

③ If add successfully, the buzzer will make two short sound "di di", otherwise, make a long sound "di".

(3) Key "2": register a single card

(allow registering card continuously)

Press "2" → scan the card → input the 4-digit user number → press "ENT" → present another card → input the 4-digit user number → press "ENT" (....continuously register cards) → press "ENT" → press "9" to exit

Note: ① The system will give a default password "888888" to each card. Such password can only be used in the Card and Password Mode.

② If the card already existed, the buzzer will make a long sound " di". Then you can scan another card.

If the inputted number has already existed, the buzzer will make a long sound "di". Then you can input another number.

(4) Key "3": delete the register card

Delete card press 3, 0 → scan the card → scan the another card

(....Continuously scan the card that need to be deleted) → press "ENT" → press "9" to exit

Delete the user number press 3, 1 → input the user number → press "ENT" → input another one → press "ENT" (....continuously delete many user numbers) → press "ENT" → press "9" to exit

Delete all the cards press 3, 2 → input "9999" → press "ENT" → press "9" to exit

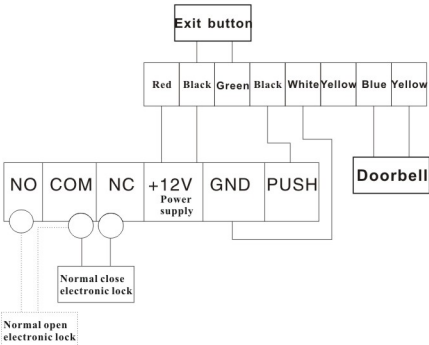
(5) Key "4": Door open mode setting

Card reader wiring instruction

7-pin wire

Red	+12V	Card reader
Black	GND	
Green	D0	
White	D1	
Blue	LED	
Yellow	BEEP	
Grey	WG26/34	

Wiring indication



Warranty description:

1. Quality problem during the warranty period, the products are free of charge for one year, the non-artificial damage, life-long maintenance.
2. Due to the improper use or other reasons as well as the breakdown products which warranty period has expired, repair free of charge, only charge the cost components, manufacturers do not bear the repair products return freight.

The following are not free warranty:

1. Opened the machines replace the originals without authorization, tearing up the date label.
2. Due to fires, floods, lightning strikes and other natural disasters or human irresistible factors damage.

Please cut along the dotted line position

----- Please cut along the dotted line position ✂

Quality Confirmation Q.C



Quality Certificate

Product Name:

Model Number:

Inspector:

Production Date: